

[HTTP://WWW.STLOUISHOMESMAG.COM/ST-LOUIS-HOMES-AND-LIFESTYLES/AUGUST-2008/LAP-OF-LUXURY-THE-CHASE-PARK-PLAZA/](http://www.stlouisshomesmag.com/st-louis-homes-and-lifestyles/august-2008/lap-of-luxury-the-chase-park-plaza/)



Lap of Luxury: The Chase Park Plaza

Customized living spaces at The Chase Park Plaza offer lavish elegance in a premier location brimming with cultural flair.

BY

Katie Underhill

“With more than 30 different floor plans and breathtaking views, The Private Residences at the Chase truly offer something for everyone.”

– Marcia Smith Niedringhaus, vice president & general counsel of IFC, Inc., the managing general partner of The Chase Park Plaza



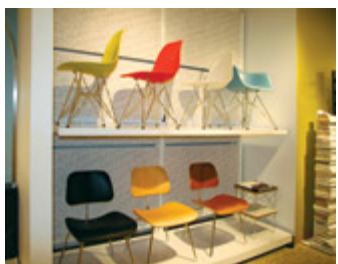
endless possibilities

The Private Residences atop this world-class hotel are anything but ordinary with unique access to hotel amenities and services. Each space is customized entirely by the owners, who select all of the architecture and design.



vibrant setting

Situated in the fashionably eclectic locale of the Central West End – Forest Park, sports, dining and shopping are just a step away.



reach out

Design Within Reach, a home studio situated in a former art gallery, markets fashionable furniture and accessories.



crêpe escape

Crêpes for every taste and meal are served at Crêpes, etc., where traditional French food is prepared with a modern flair.



prized jewel

Look for all that glitters at McGinty Jewelers, a shop that prides itself in being a “seriously chic jewelry boutique.”